

PM SERIES External Gear Pumps



- Max. Capacity: 80 m³/h
- Max. Differential Pressure: 10 bar
- Max. Viscosity: 450.000 cSt
- Temperature Range: -30 °C to +250 °C



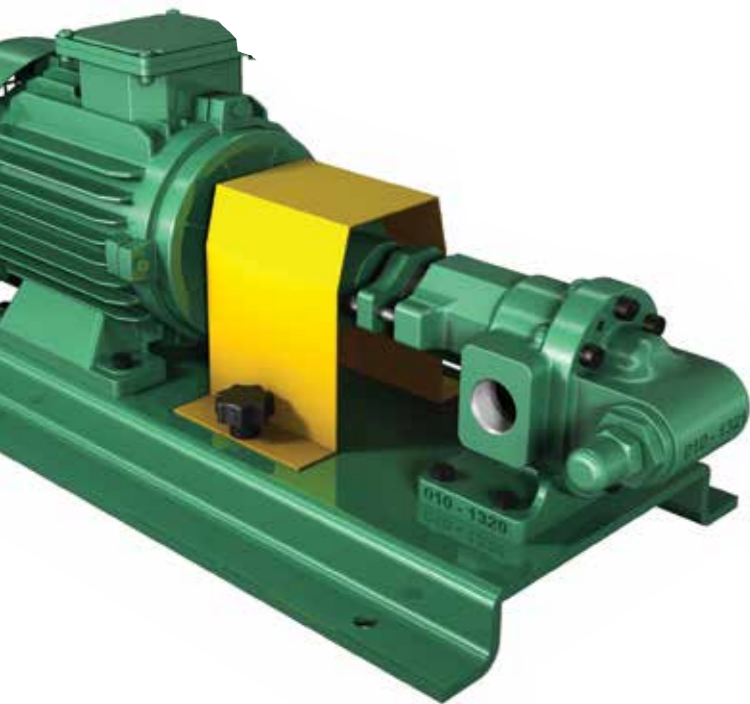
> With Cartridge Mechanical Seal



> With Flanged & Single Mechanical Seal



> With Cover Jacketed



> Direct Coupling With Relief Valve

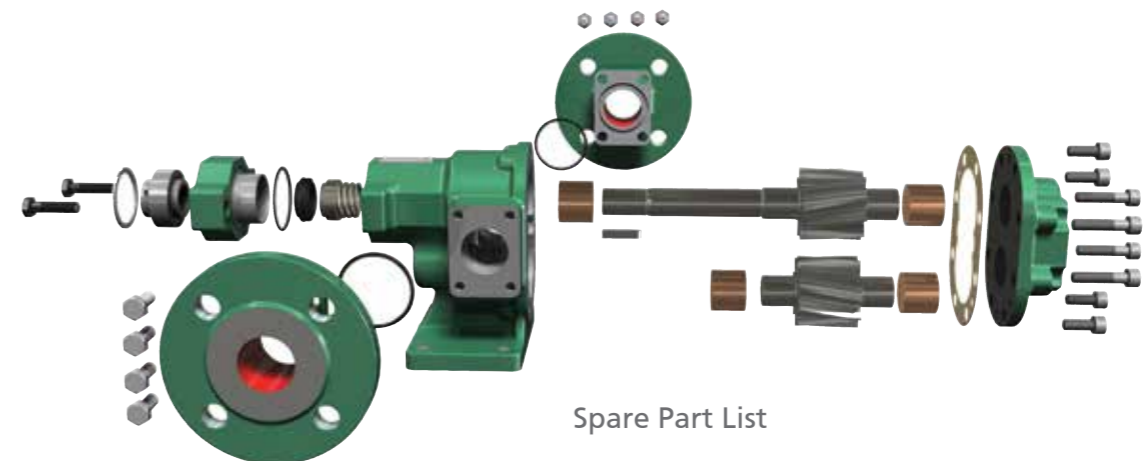
External Gear Pumps are self-priming positive displacement pumps and they have very good vacuum capability. Can be used for low, medium and high viscosity applications with adjustable clearances. They require less parts in order to compact design and to save space. Can be used for both direction with suitable seal. Application variety with helical and spur gear options

FEATURES AND ADVANTAGES:

- > Applications variety with 12 different casing size
- > Operating wide range of viscosity
- > Easy of usage and maintenance with only two moving parts
- > Can be apply many different material option (cast iron, ductile iron, steel or stainless steel)
- > The pump design is suitable for every type of seal (lip seal, packing gland, single mechanical seal, double mechanical seal)
- > Connection type options, ANSI&DIN Flanged connection or BSP&NPT threaded connection
- > They are more economical than rotary lobe pumps and screw pumps because can be applied only one seal
- > Heating / Cooling jackets can be applied to cover
- > Not required special tools for maintenance
- > Connection design is adjustable only for 180°
- > Self-priming is up to 950 mbar
- > Relief Valve can be applied to pump cover
- > The design is allowed for dosing applications

Model	Inlet / Outlet Size		Capacity (at Max. Speed)		Max. Speed (rpm)	Max. Differential Pressure *	
	mm	Inch	m³/h	GPM		PSI	Bar
PM 15	15	½"	0.7	3	1750	145	10
PM 15L	15	½"	1.5	6.5			
PM 20	20	¾"	2.4	10			
PM 25	25	1"	3.5	15			
PM 32	32	1 ¼"	4.8	21			
PM 32L	32	1 ¼"	7	31	1450		
PM 40	40	1 ½"	9,5	42			
PM 50	50	2"	10	44	950		
PM 50L	50	2"	18	80			
PM 65	65	2 ½"	25	110			
PM 80	80	3"	35	155			
PM 100	100	4"	80	220			

* (Higher pressures are available with factory approval.)



Spare Part List